



Project **MANGROVE +**

Mangrove Afforestation for Native Green Regeneration with Open-source Validation & Engaged Communities

1. Executive Summary:

The **MANGROVE+** project is a tech-enabled mangrove afforestation and conservation initiative targeting the vulnerable coastal ecosystems of the **Sundarbans**. Mangrove forests are critical natural assets, delivering essential ecosystem services including climate change mitigation, coastal protection against erosion and extreme weather events, biodiversity conservation, and sustainable livelihood support for local communities.

Despite their ecological importance, mangrove ecosystems in the Sundarbans face escalating threats from environmental degradation, climate change, and anthropogenic pressures. In response, MANGROVE+ proposes a holistic approach that integrates community-driven plantation efforts with advanced blockchain technology to enhance transparency, traceability, and accountability across the project lifecycle.

The initiative will empower local and indigenous communities through capacity building, awareness campaigns, and inclusive governance models, ensuring their active participation and long-term stewardship. Each plantation site will be tech equipped with geotagging and blockchain with a tailored dashboard to record and exhibit the intervention and impact, creating a verifiable and immutable record of environmental impact.

By leveraging the synergy between traditional ecological knowledge and modern digital innovation, MANGROVE+ offers a replicable and scalable model for mangrove restoration that aligns with global environmental goals, including climate resilience, biodiversity conservation, and sustainable development. The project will contribute measurable outcomes in carbon sequestration and ecosystem regeneration, positioning itself as a flagship example of accountable, impact-driven coastal restoration.



This Picture is from Sundarbans, which shows the destruction caused to Mangrove trees by human induced problems and climate change impact. These Mangrove Trees shielded nearby villages from ocean waves and floods but now the village is prone to flooding and has been deserted due to fear among local Population.

2. Strategic Value for CSR & Impact Partners

At **MANGROVE+**, we are dedicated to delivering not just environmental regeneration but also meaningful socio-economic upliftment, powered by cutting-edge technology and genuine community empowerment. Our integrated approach guarantees unparalleled transparency, accountability, and direct alignment with global sustainability frameworks, offering a strategic opportunity for your organization to create lasting impact.

Here's how your partnership with MANGROVE+ delivers exceptional value:

2.1 Transparent Carbon Offsetting

- o **Strategic Carbon Solutions:** Invest with confidence in customized mangrove-based carbon offset strategies, precisely designed to align with your corporate sustainability goals and impact priorities.
- o **Significant Sequestration:** Mangrove forests are exceptionally efficient carbon sinks, contributing to 14% of oceanic CO₂ sequestration, with the Sundarbans alone absorbing 98% of the carbon emitted annually by a nearby coal-fired power plant.
- o **Digital Impact Monitoring:** Gain real-time visibility into your contribution's ecological and social footprint through a sophisticated digital dashboard, ensuring your investment delivers lasting benefits in carbon sequestration, biodiversity conservation, and enhanced community resilience.



2.2 Advanced Analytics & Reporting

- o **Comprehensive Business Dashboard:** Obtain actionable insights into your environmental returns on investment and overall sustainability performance.
- o **Tailored Reports:** Receive detailed, customizable reports with continuously updated data on environmental and socio-economic outcomes.
- o **Seamless Integration:** These reports seamlessly integrate with your existing ESG and CSR disclosures, utilizing interactive visualizations, maps, and graphs to clearly and engagingly depict project progress and impact.

2.3 Empowerment through Technology

- o **User-Friendly Mobile Application:** Experience unprecedented transparency and direct engagement through our integrated technology ecosystem, enabling community members to manage plantation data and perform real-time tree tagging.
- o **GIS-Enabled Traceability:** Plantation sites are precisely mapped using GIS to ensure transparency and verifiable impact monitoring.
- o **Blockchain Authentication:** Benefit from immutable, blockchain-verified records for every mangrove intervention, assigning each a unique digital identity that documents its planting, growth, and maintenance, guaranteeing authenticity and building trust with all stakeholders.
- o **Geo-Tagged Verification:** Location-specific, tamper-proof photo documentation enriches transparency, even enabling offline data collection in low-connectivity zones.

2.4 Alignment with Global Sustainability Goals

- o **SDG Impact:** Your investment with MANGROVE+ makes a tangible contribution to multiple United Nations Sustainable Development Goals (SDGs). Specifically, we advance Climate Action (SDG 13), enhance Life Below Water (SDG 14) and Life on Land (SDG 15), address No Poverty (SDG 1) by supporting sustainable income sources for vulnerable populations, and promote Responsible Consumption and Production (SDG 12).



- o **ESG Compliance:** MANGROVE+ projects are meticulously designed to meet rigorous Environmental, Social, and Governance (ESG) criteria, strengthening your company's sustainability profile and bolstering investor confidence.

2.5 Community-Centric Impact

- o **Sustainable Livelihoods:** Our project is deeply rooted in empowering local and indigenous communities, who are our primary beneficiaries. We support agroforestry and ecosystem-based livelihood diversification programs.
- o **Capacity Building:** We enhance local governance and technical capabilities through Farmer Producer Organizations (FPOs) and community collectives, fostering long-term stewardship.
- o **Holistic Development:** By linking mangrove conservation directly with tangible livelihood enhancements, we ensure communities are motivated to sustain both their economic well-being and ecological health.

2.6 Recognition & Branding Opportunities

- o **Impact Showcasing:** Utilize our digital platforms and communication channels to highlight your leadership in sustainability and conservation.
- o **Stakeholder Engagement:** Partnering with MANGROVE+ provides a powerful narrative for strengthening your brand reputation among customers, employees, and investors.

3. Problem Statement: The Sundarbans' Critical Imbalance

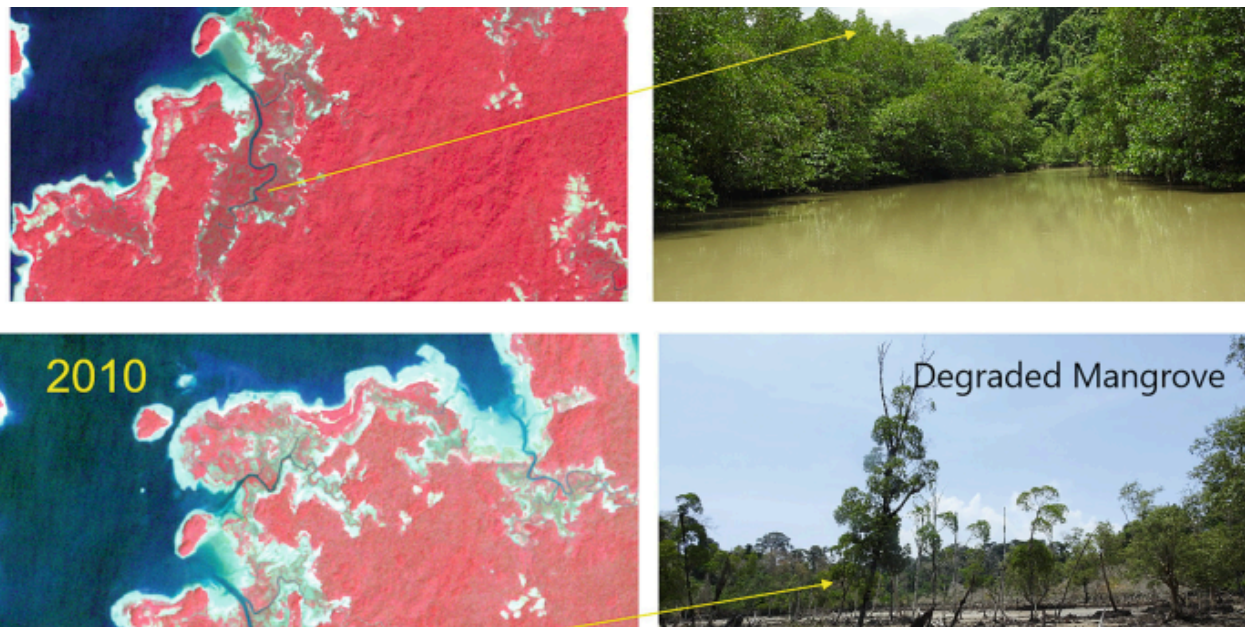
Despite global recognition of their immense ecological and socio-economic value, the vital mangrove forests of the Sundarbans are experiencing accelerated degradation. This decline is driven by a complex interplay of escalating socio-economic pressures and systemic political challenges, pushing this fragile ecosystem to the brink.

Specifically, the relentless drivers of deforestation and ecosystem damage include pervasive unsustainable charcoal production, over-reliance on wood fuel for basic needs, destructive overharvesting of timber for construction, and increasing pollution in the precious coastal waters. These human-induced activities, coupled with the escalating impacts of climate change, are dismantling the natural defences of the region.



The consequences are catastrophic: the degradation directly threatens indispensable ecosystem services. We are witnessing a perilous erosion of critical coastal protection, leaving millions vulnerable to storm surges and erosion. The loss of these carbon-rich forests undermines vital carbon sequestration efforts, exacerbating global climate change. Furthermore, the rapid decline in biodiversity jeopardizes countless species and the delicate balance of the entire ecosystem.

This crisis places vulnerable communities, who are intrinsically linked to the health of the mangroves for their livelihoods and very survival, at heightened and immediate risk. Without urgent, decisive, and integrated action to halt and reverse this critical decline, both the unique natural heritage of the Sundarbans and the lives of its inhabitants face an irreversible future.



4. Project Rationale: Safeguarding the Sundarbans

The escalating crisis of mangrove degradation in the Sundarbans, as detailed in our Problem Statement, underscores an urgent ecological and humanitarian imperative. While the problem is clear, the solution demands a targeted, data-driven, and sustainable approach. Project **MANGROVE+** stands as that precise, strategic response.



Why **MANGROVE+** is the Essential Solution:

- **Indispensable Ecosystem Services at Stake:** Mangroves are demonstrably vital for coastal protection, offering an irreplaceable natural barrier against the increasing ferocity of cyclones and erosion along river shorelines. Their role in climate mitigation is equally critical; despite covering only 0.5% of the global coastal area, mangrove forests contribute to a staggering 14% of oceanic CO₂ sequestration. The Sundarbans alone, a testament to their efficiency, absorbs an astonishing 98% of the carbon emitted annually by a nearby coal-fired power plant. Reforestation, particularly of species like *Rhizophora mucronate*, is therefore not just beneficial but imperative, as these species play a critical role in preventing soil erosion and sequestering significant amounts of CO₂.
- **Bridging the Gap:** Land degradation and increasingly frequent cyclones threaten these immense benefits and the very existence of the communities dependent on them. MANGROVE+ directly addresses this gap by combining robust community-driven restoration efforts with cutting-edge, blockchain-enabled transparency. This ensures not only the planting and growth of mangroves but also unprecedented accountability and scalable impact, providing a verifiable antidote to the threats.
- **A Holistic and Empowering Approach:** Our rationale extends beyond mere plantation. We adopt a holistic approach that integrates the latest in conservation science with deep socio-economic engagement. This includes empowering local and indigenous communities through capacity building, promoting sustainable livelihoods, and fostering long-term stewardship, ensuring the restored ecosystems are protected by those who understand them best.
- **Strategic Opportunity for Verifiable Impact:** This project offers CSR partners a strategic opportunity to drive measurable environmental and social outcomes directly aligned with global sustainability goals. Through our transparent monitoring and reporting mechanisms, partners can witness the tangible impact of their investment, from carbon capture to community upliftment, demonstrating a profound commitment to ESG principles and corporate responsibility.
- **Scalable, Replicable, and Future-Proof:** The MANGROVE+ model is designed for longevity and expansion. Its blend of community-led action and robust technological validation creates a blueprint that is not only effective in the unique context of the Sundarbans but also highly scalable and replicable across other vulnerable coastal regions worldwide.

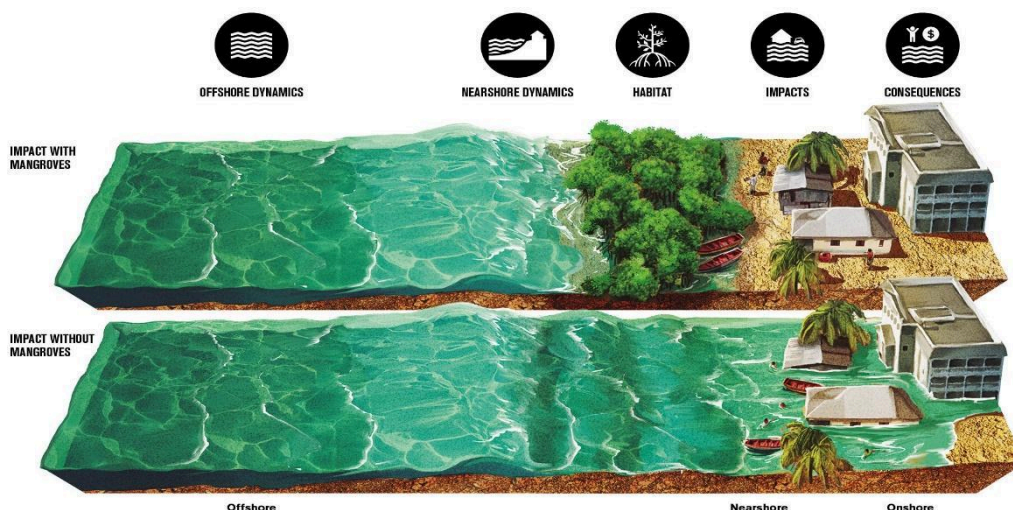


- In essence, Project MANGROVE+ is more than a restoration initiative; it is a strategic investment in the future resilience of the Sundarbans, its people, and our shared global climate. It represents a potent, accountable, and impactful pathway for organizations committed to driving meaningful change.

5. Project Objectives: Building a Resilient Future, Together

The **MANGROVE+** initiative is committed to delivering measurable environmental restoration and empowering communities. Our objectives are designed to create lasting impact through strategic action and innovation:

- **Rejuvenate Coastal Ecosystems:** Conduct large-scale mangrove plantation in degraded areas across the Sundarbans to significantly enhance ecological resilience and boost biodiversity.
- **Empower Through Knowledge:** Educate and engage local communities, key stakeholders, and policymakers on the vital role of mangroves in coastal protection, climate mitigation, and fostering sustainable development.
- **Cultivate Community Stewardship:** Establish and actively support grassroots initiatives that empower communities to take full ownership of the sustainable management and long-term protection of mangrove forests.
- **Forge Powerful Partnerships:** Facilitate strategic collaborations between government bodies, NGOs, local communities, and corporate partners to amplify our restoration impact and mobilize essential resources.
- **Strengthen Local Capacities:** Implement targeted training and skill-development programs to equip communities with best practices in mangrove conservation and enable diversified, sustainable livelihoods.





- **Ensure Transparent & Verifiable Impact:** Leverage cutting-edge blockchain technology and GIS mapping for real-time tracking, undeniable transparency, and data-driven verification of all plantation activities, ensuring ultimate accountability.

6. Project Approach: A Holistic, Tech-Enabled Path to Sustainable Impact

The **MANGROVE+** project adopts a holistic, community-centric, and technology-enabled strategy to restore vital mangrove ecosystems and empower local stakeholders for sustainable, long-term impact. Our approach is structured into the following key phases, each designed for precision, transparency, and effective collaboration:

- **Site Assessment and Baseline Survey** Comprehensive ecological and socio-economic assessments are meticulously conducted to identify degraded mangrove areas, evaluate specific soil and water conditions, and map existing community resources. Baseline data is rigorously collected through detailed field surveys and advanced GIS mapping, establishing a robust foundation for targeted interventions and accurate impact measurement.
- **Community Engagement and Capacity Building** Local communities, including the most vulnerable and tribal groups, are actively engaged from the outset through dynamic awareness campaigns, participatory planning sessions, and tailored training programs. We identify and empower Community Resource Persons (CRPs) and "Green Champions" within these communities to lead local conservation efforts, fostering genuine ownership and sustainable practices.
- **Technology-Enabled Plantation and Monitoring** Mangrove planting is systematically carried out using scientifically selected species best suited to local ecological conditions. To ensure unparalleled transparency and precise impact measurement, advanced technology tools are seamlessly integrated:
 - **Blockchain Technology:** Utilized to authenticate and securely record each plantation event, enabling complete traceability and providing immutable proof of contribution.
 - **GIS Mapping:** Employed to continuously monitor plantation sites.
 - **Mobile Application:** A user-friendly mobile application facilitates efficient data collection, individual tree tagging, and streamlined community reporting from the field.



- **Integrated Livelihood and Ecosystem Interventions** Complementary activities are implemented to support both sustainable livelihoods and holistic ecological restoration. These include the promotion of organic farming, strategic soil conservation techniques, the implementation of water-efficient irrigation methods, and targeted skill development programs designed to empower communities with diverse, eco-friendly income streams.
- **Multi-Stakeholder Partnerships and Convergence** Strategic alliances are forged with a diverse array of partners, including government agencies, non-governmental organizations (NGOs), esteemed research institutions, and vital corporate partners. This collaborative framework is designed to leverage collective resources, ensure seamless alignment with relevant government schemes, and guarantee the scalability and long-term sustainability of the project's transformative outcomes.
- **Impact Evaluation and Reporting** Rigorous and regular monitoring and evaluation are conducted, combining sophisticated technology-enabled data analytics with essential field verification. Detailed impact reports and user-friendly dashboards are consistently shared with our CSR partners and all key stakeholders, transparently demonstrating progress, validating impact, and informing adaptive management strategies for continuous improvement.

7. Technology-Driven Approach: Our Unique Value Proposition

MANGROVE+ revolutionizes traditional mangrove restoration through an integrated technology ecosystem designed to deliver verifiable impact, transparent operations, and meaningful community engagement. This technology-first approach ensures that every action is accountable, every outcome measurable, and every stakeholder recognized.

7.1 Blockchain-Secured Verification System

- **Digital Tree Certificates:** Mangrove plantation interventions are assigned with unique digital identity recorded immutably on our blockchain, documenting its planting, growth, and maintenance.
- **Immutable Digital Ledger:** Full transparency from intervention to impact verification, eliminating data manipulation or misreporting.



7.2 Advanced Geospatial Intelligence

- **GIS Monitoring:** Satellite map imagery provides updates on plantation and environmental conditions.
- **Climate Impact Modeling:** Predictive analytics quantify carbon sequestration and broader environmental benefits.

7.3 Community-Centric Mobile Application

- **Offline Data Collection:** Enables members to record activities even in low-connectivity zones.
- **Geo-Tagged Verification:** Location-specific, tamper-proof photo documentation enriches transparency.
- **Knowledge Exchange:** Bridges traditional ecological knowledge with scientific best practices.

7.4 Real-Time Analytics Dashboard

- **Multi-Stakeholder Views:** Custom dashboards tailored for donors, communities, and project managers.
- **Live Impact Metrics:** Continuously updated data on environmental and socio-economic outcomes.
- **Interactive Visualizations:** Maps and graphs depict project progress and impact clearly and engagingly.

This robust digital infrastructure is powered by the cutting-edge expertise of our technological partners, *EcoServeDev under #betterplanettogether initiative*, guaranteeing the highest standards of transparency and data integrity.



8. Project Sustainability

The long-term success of the MANGROVE+ project hinges on robust community ownership, institutional collaboration, and capacity building to ensure the sustained protection and management of planted mangrove forests.

- **Community and Local Self-Government / Village Authority Stewardship:**

The planted mangrove areas will be jointly supervised by the community and local self-government / village authorities, alongside relevant government bodies. This shared governance model promotes accountability and fosters a sense of custodianship among stakeholders.
- **Capacity Building for Sustainable Management:**

Comprehensive training programs will empower community members with practical skills and knowledge to protect, monitor, and sustainably manage mangrove ecosystems. Training will include hands-on field exercises involving the planting and maintenance of mangrove seedlings across the project area, reinforcing experiential learning.
- **Formal Agreements for Protection:**

Collaborative agreements will be established between local communities, local self-government / village authorities, government agencies, and implementing partners to define roles, responsibilities, and commitments for the ongoing conservation and sustainable use of reforested zones.
- **Livelihood Integration and Ecosystem Stewardship:**

By linking mangrove conservation with livelihood enhancement, the project will enable communities to sustain both their economic well-being and ecological health. This integrated approach ensures that conservation efforts are supported by tangible benefits, motivating continued stewardship.
- **Continuous Monitoring and Adaptive Management:**

Ongoing supervision and capacity reinforcement will support adaptive management practices, ensuring that reforestation efforts respond effectively to environmental and socio-economic dynamics over time.



9. Plantation Targets: Quantifiable Growth, Verifiable Impact

MANGROVE+ is committed to delivering tangible, measurable results. Our strategic targets ensure significant ecological restoration and provide transparent, data-driven outcomes for our partners.

- **Ambitious Reforestation Goal:** During FY 2025–2026, we aim to plant 500,000 (five lakh) mangrove saplings across the Sundarbans' critical coastal zones. This initial large-scale intervention is designed to establish a robust foundation for ecosystem recovery.
- **Ensuring Long-Term Success:** Our objective is to achieve a healthy and ecologically impactful survival rate of 50% to 80% for these saplings in subsequent years (FY 2026–27 and FY 2027–28). This focus on survival maximizes long-term carbon sequestration and strengthens vital coastal defences.
- **Precision Monitoring & Adaptive Management:** Leveraging our cutting-edge, technology-enabled verification system, we will systematically track survival rates and overall mangrove health. This continuous monitoring, powered by blockchain and GIS, provides real-time insights, guiding adaptive management strategies and ensuring transparent progress reporting.

Key Plantation & Monitoring Milestones:

Metric / Phase	FY 2025–26	FY 2026–27	FY 2026–27
Plantation Target	500,000 Saplings	Focus on Survival	Focus on Survival
Survival Rate Goal	Initial Establishment	50% - 90% (Phase 1)	50% - 80% (Phase 2)
Monitoring Method	Real-time Tech Verification	Continuous Tech & Field Tracking	Ongoing Tech, Field Tracking & Improvement
Primary Outcome	Large-scale Afforestation	Enhanced Ecosystem & Carbon Sequestration	Long-term Stability & Climate Resilience



10. Targeted Beneficiaries: Empowering the Stewards of the Sundarbans

The **MANGROVE+** initiative is fundamentally designed to create profound and lasting positive impacts on the lives of those who live most intimately with the Sundarbans' ecosystems. Our primary beneficiaries are the **local and indigenous communities** residing in the vulnerable coastal zones of the Sundarbans, whose livelihoods and very existence are intrinsically linked to the health of the mangrove forests.

We specifically target these communities because:

- **Vulnerability to Climate Impacts:** They are disproportionately affected by coastal erosion, frequent cyclones, and the degradation of natural barriers, putting their homes, safety, and traditional ways of life at extreme risk.
- **Reliance on Ecosystem Services:** Their livelihoods, often based on fishing, collecting forest products, and traditional farming, directly depend on the health and productivity of the mangrove ecosystems.
- **Guardians of Traditional Knowledge:** These communities possess invaluable traditional ecological knowledge about mangroves, which is crucial for successful and sustainable conservation efforts.

Our project's benefits are designed to be multi-faceted and directly enhance their well-being:

- **Sustainable Livelihood Enhancement:** Through diversified, eco-friendly income streams such as agroforestry and other ecosystem-based programs, we reduce their reliance on destructive practices and build economic resilience, contributing directly to **SDG 1 (No Poverty)**.
- **Empowerment and Capacity Building:** We establish and support community-led initiatives like Farmer Producer Organizations (FPOs) and identify "Green Champions," empowering them with vital skills in mangrove conservation, sustainable resource management, and inclusive governance. This fosters true local ownership and stewardship.

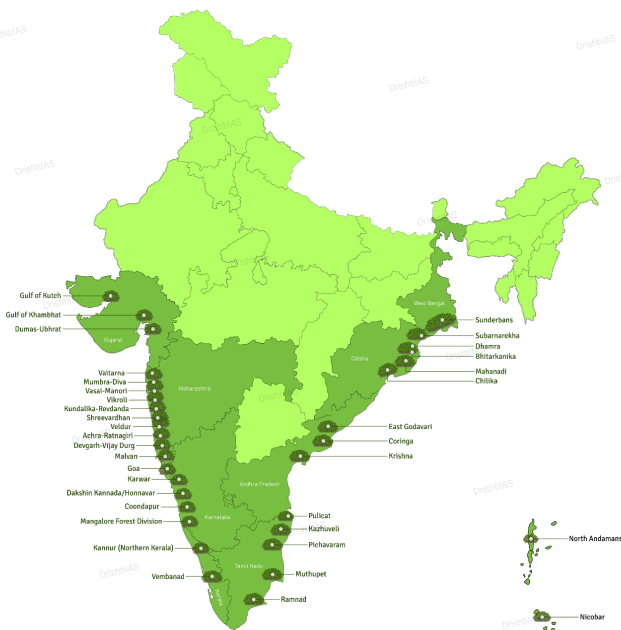


- **Enhanced Coastal Resilience:** By restoring robust mangrove barriers, the project directly protects their homes and lives from the increasing threats of storm surges and erosion, ensuring greater safety and security.
- **Improved Health and Quality of Life:** A healthier, thriving ecosystem provides cleaner water, more abundant natural resources, and a more stable environment, directly improving the overall well-being and health outcomes for these communities.
- **Inclusivity and Equity:** The project is committed to ensuring that benefits are equitably distributed, promoting gender equity and social cohesion within the beneficiary communities, aligning with broader social governance criteria.

MANGROVE+ is more than a conservation project; it is an investment in human dignity, resilience, and the long-term prosperity of the Sundarbans' most vital asset: its people.

12. Call to Action : #Act4Earth for a #betterplanettogether

MANGROVES IN INDIA



Project **MANGROVE+** is a pioneering initiative for ecological regeneration, seamlessly blending local wisdom with cutting-edge technology and community empowerment. This transparent, scalable model delivers measurable environmental and social returns, driving climate resilience and environmental justice in the Sundarbans and beyond. We invite you to partner with **MANGROVE+** to secure a sustainable future and champion verifiable global impact.